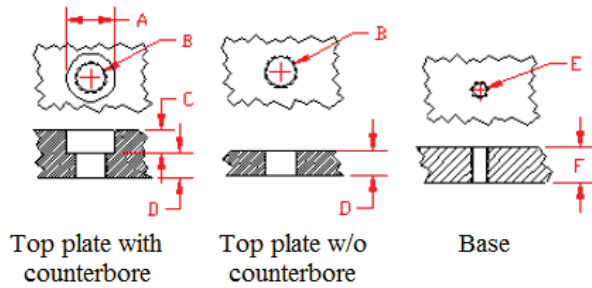


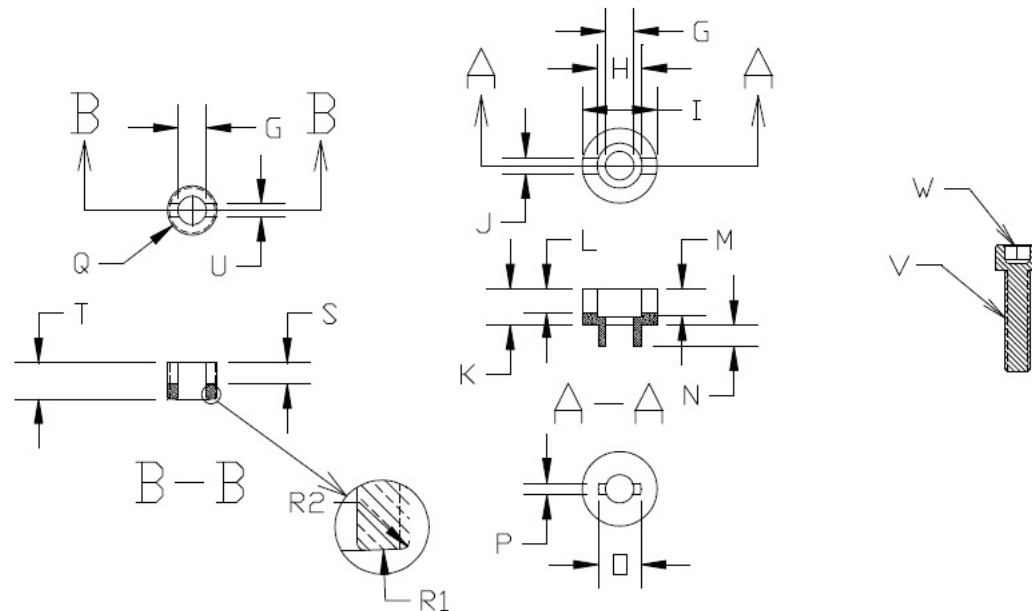
## How to prepare your parts? (Red dimensions)



PART NO	CONFIGUR.	Stroke	A	B=Q	C	D=T	E	Fmin	G	H	I	J
HD001000	02-56-56-03	0.030	276	8-56	126	113	2-56	107	96	150	266	64
HD001001	02-56-56-05	0.050	276	8-56	126	133	2-56	252	96	150	266	64
HD001002	02-56-80-03	0.030	276	8-80	126	113	2-56	107	96	150	266	64
HD001003	02-56-80-05	0.050	276	8-80	126	133	2-56	252	96	150	266	64
HD001004	04-40-40-04	0.040	340	12-40	162	145	4-40	190	125	198	330	63
HD001005	04-40-40-07	0.070	340	12-40	162	175	4-40	220	125	198	330	63
HD001006	04-40-64-04	0.040	340	12-64	162	145	4-40	190	125	198	330	63
HD001007	04-40-64-07	0.070	340	12-64	162	175	4-40	220	125	198	330	63
HD001008	06-32-32-04	0.040	382	1/4-32	192	165	6-32	291	150	241	370	78
HD001009	06-32-32-08	0.080	382	1/4-32	192	205	6-32	331	150	241	370	78
HD001010	06-32-60-04	0.040	382	1/4-60	192	165	6-32	291	150	241	370	78
HD001011	06-32-60-08	0.080	382	1/4-60	192	205	6-32	331	150	241	370	78

PART NO	K	L	M	N	O	P	R1	R2	S	U	V	W	Tool
HD001000	116	60	86	60	135	28 - 0.002	1.8"	5	60	31 + 0.002	2-56x1/4	5/64	TL001000
HD001001	116	60	86	80	135	28 - 0.002	1.8"	5	80	31 + 0.002	2-56x3/8	5/64	
HD001002	116	60	86	60	135	28 - 0.002	1.8"	5	60	31 + 0.002	2-56x1/4	5/64	
HD001003	116	60	86	80	135	28 - 0.002	1.8"	5	80	31 + 0.002	2-56x3/8	5/64	TL001004
HD001004	152	70	112	70	175	40	2.4"	7	70	47	4-40x3/8	3/32	
HD001005	152	70	112	100	175	40	2.4"	7	100	47	4-40x3/8	3/32	
HD001006	152	70	112	70	175	40	2.4"	7	70	47	4-40x3/8	3/32	
HD001007	152	70	112	100	175	40	2.4"	7	100	47	4-40x3/8	3/32	TL001008
HD001008	182	80	138	70	200	52	2.7"	8	70	62	6-32x1/2	7/64	
HD001009	182	80	138	110	200	52	2.7"	8	110	62	6-32x1/2	7/64	
HD001010	182	80	138	70	200	52	2.7"	8	70	62	6-32x1/2	7/64	
HD001011	182	80	138	110	200	52	2.7"	8	110	62	6-32x1/2	7/64	

## Dimensions of the features of components of standard AFAB Kits → (Blue dimensions)



Press: Alt/← - to "Exit"