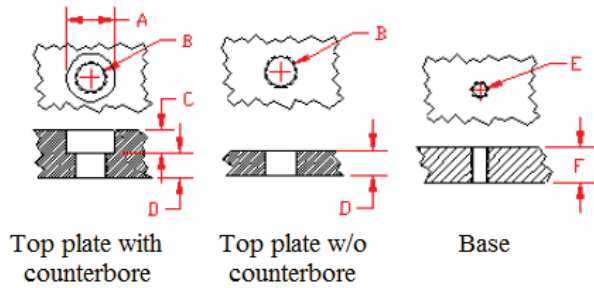


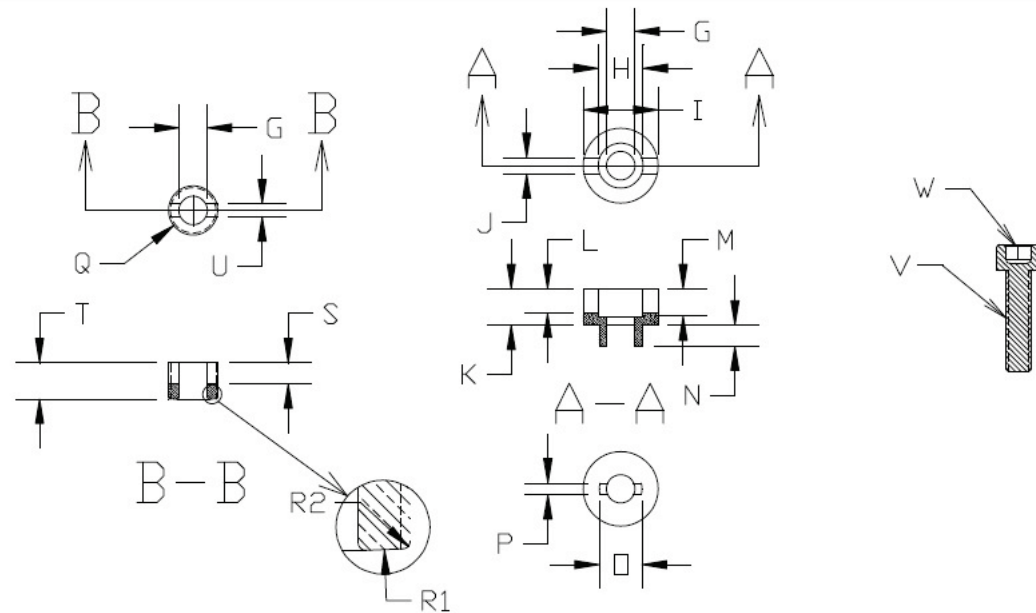
## How to prepare your parts? (Red dimensions)



PART NO	CONFIGUR.	Stroke	A	B=Q	C	D=F	E	F	G	H	I	J
HD001024	5/16-24-24-09	0.090	758	1/2-24	395	255	5/16-24	297	328	485	742	109
HD001025	5/16-24-24-18	0.180	758	1/2-24	395	345	5/16-24	457	328	485	742	109
HD001026	5/16-24-40-09	0.090	758	1/2-40	395	255	5/16-24	297	328	485	742	109
HD001027	5/16-24-40-18	0.180	758	1/2-40	395	345	5/16-24	457	328	485	742	109
HD001028	3/8-24-24-11	0.110	948	5/8-24	475	285	3/8-24	375	409	646	930	109
HD001029	3/8-24-24-22	0.220	948	5/8-24	475	395	3/8-24	515	409	646	930	109
HD001030	3/8-24-40-11	0.110	948	5/8-40	475	285	3/8-24	375	409	646	930	109
HD001031	3/8-24-40-22	0.220	948	5/8-40	475	395	3/8-24	515	409	646	930	109
HD001032	1/2-13-20-15	0.150	1218	13/16-20	630	350	1/2-20	405	520	770	1200	128
HD001033	1/2-13-20-30	0.300	1218	13/16-20	630	500	1/2-20	630	520	770	1200	128
HD001034	1/2-13-32-15	0.150	1218	13/16-32	630	350	1/2-20	405	520	770	1200	128
HD001035	1/2-13-32-30	0.300	1218	13/16-32	630	500	1/2-20	630	520	770	1200	128

PART NO	K	L	M	N	O	P	R1	R2	S	U	V	W	Tool
HD001024	386	130	315	130	448	80	5.4"	16	130	94	5/16-24x5/8	1/4	TL001012
HD001025	386	130	315	220	448	80	5.4"	16	220	94	5/16-24x7/8	1/4	
HD001026	386	130	315	130	448	80	5.4"	16	130	94	5/16-24x5/8	1/4	
HD001027	386	130	315	220	448	80	5.4"	16	220	94	5/16-24x7/8	1/4	
HD001028	484	140	394	160	551	90	6.8"	20	160	109	3/8-24x3/4	5/16	TL001016
HD001029	484	140	394	270	551	90	6.8"	20	270	109	3/8-24x1	5/16	
HD001030	484	140	394	160	551	90	6.8"	20	160	109	3/8-24x3/4	5/16	
HD001031	484	140	394	270	551	90	6.8"	20	270	109	3/8-24x1	5/16	
HD001032	620	150	500	200	735	90	8.9"	30	200	109	1/2-13x7/8	3/8	TL001020
HD001033	620	150	500	350	735	90	8.9"	30	350	109	1/2-13x5/4	3/8	
HD001034	620	150	500	200	735	90	8.9"	30	200	109	1/2-13x7/8	3/8	
HD001035	620	150	500	350	735	90	8.9"	30	350	109	1/2-13x5/4	3/8	

## Dimensions of the features of components of standard AFAB Kits → (Blue dimensions)



Press: Alt/← - to "Exit"