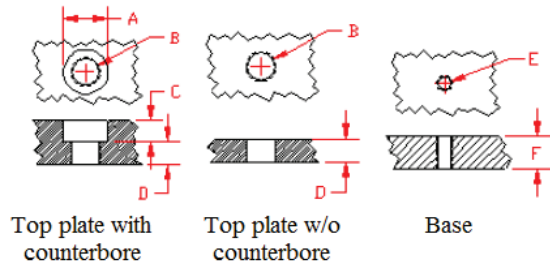


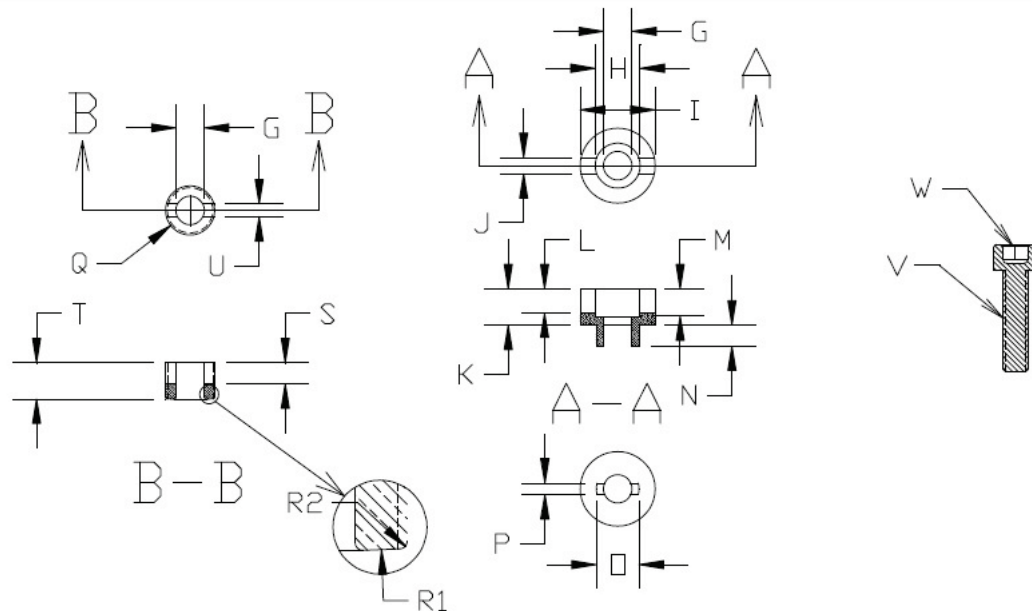
## How to prepare your parts? (Red dimensions)



PART NO	CONFIGUR.	Stroke	A	B=Q	C	D=T	E	Fmi	G	H	I	J
HD001074	8.0-1.25-1.5-2.3	2.3	18.4	M12/1.5	10.1	8.3	8.-1.25	8.9	8.4	13.4	18	2.6
HD001075	8.0-1.25-1.5-4.6	4.6	18.4	M12/1.5	10.1	10.1	8.-1.25	12.1	8.4	13.4	18	2.6
HD001076	8.0-1.25-1.0-2.3	2.3	18.4	M12/1.0	10.1	8.3	8.-1.25	8.9	8.4	13.4	18	2.6
HD001077	8.0-1.25-1.0-4.6	4.6	18.4	M12/1.0	10.1	10.1	8.-1.25	12.1	8.4	13.4	18	2.6
HD001078	10.-1.5-1.5-2.8	2.8	24.4	M16/1.5	12.6	8.8	10.-1.5	9.7	10.4	16.4	23.6	2.9
HD001079	10.-1.5-1.5-5.6	5.6	24.4	M16/1.5	12.6	11.6	10.-1.5	14.9	10.4	16.4	23.6	2.9
HD001080	10.-1.5-1.0-2.8	2.8	24.4	M16/1.0	12.6	8.8	10.-1.5	9.7	10.4	16.4	23.6	2.9
HD001081	10.-1.5-1.0-5.6	5.6	24.4	M16/1.0	12.6	11.6	10.-1.5	14.9	10.4	16.4	23.6	2.9
HD001082	12.-1.75-1.75-3.8	3.8	30.4	M20/1.7	15.3	10.8	12.-1.75	15	12.5	18.5	30	3.2
HD001083	12.-1.75-1.75-7.6	7.6	30.4	M20/1.7	15.3	14.6	12.-1.75	16.2	12.5	18.5	30	3.2
HD001084	12.-1.75-1.0-3.8	3.8	30.4	M20/1.0	15.3	10.8	12.-1.75	15	12.5	18.5	30	3.2
HD001085	12.-1.75-1.0-7.6	7.6	30.4	M20/1.0	15.3	14.6	12.-1.75	16.2	12.5	18.5	30	3.2

PART NO	K	L	M	N	O	P	R1	R2	S	U	V	W	Tool
HD001074	9.8	3.3	8	3.3	9.8	2.1	135	0.4	3.3	2.39	8.-1.25/20	6.0	TL001074
HD001075	9.8	3.3	8	5.6	9.8	2.1	135	0.4	5.6	2.39	8.-1.25/25	6.0	
HD001076	9.8	3.3	8	3.3	9.8	2.1	135	0.4	3.3	2.39	8.-1.25/20	6.0	
HD001077	9.8	3.3	8	5.6	9.8	2.1	135	0.4	5.6	2.39	8.-1.25/25	6.0	
HD001078	12.3	3.6	10	4.0	14.0	2.3	175	0.5	4.0	2.76	10.-1.5/22	8.0	TL001078
HD001079	12.3	3.6	10	6.8	14.0	2.3	175	0.5	6.8	2.76	10.-1.5/30	8.0	
HD001080	12.3	3.6	10	4.0	14.0	2.3	175	0.5	4.0	2.76	10.-1.5/22	8.0	
HD001081	12.3	3.6	10	6.8	14.0	2.3	175	0.5	6.8	2.76	10.-1.5/30	8.0	
HD001082	15.0	3.8	12	5.0	17.8	2.3	225	0.75	5.0	2.76	12.-1.75/30	10.0	TL001082
HD001083	15.0	3.8	12	8.6	17.8	2.3	225	0.75	8.6	2.76	12.-1.75/35	10.0	
HD001084	15.0	3.8	12	5.0	17.8	2.3	225	0.75	5.0	2.76	12.-1.75/30	10.0	
HD001085	15.0	3.8	12	8.6	17.8	2.3	225	0.75	8.6	2.76	12.-1.75/35	10.0	

## Dimensions of the features of components of standard AFAB Kits



Press: Alt/← - to "Exit"